

## DVR Mobile viewer for Android

- Compatible with OS 2.1  
Tested with SAMSUNG GALAXY S

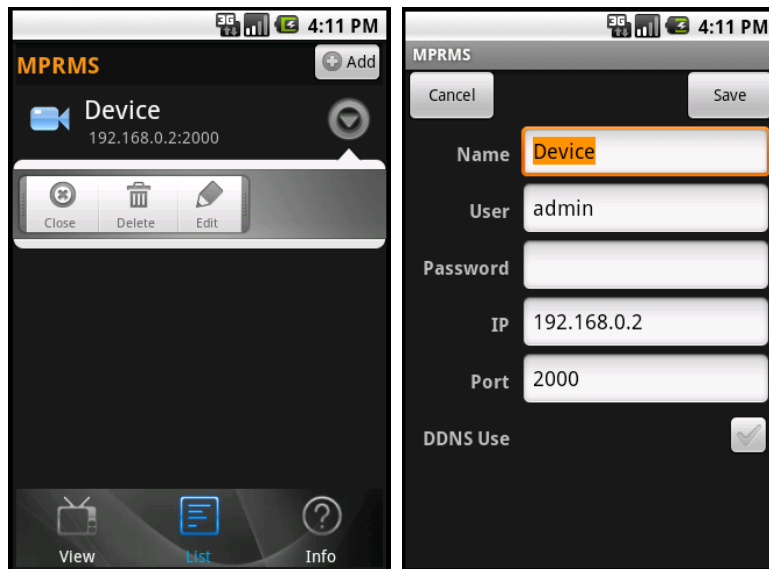
- Installation



GO to the Android's market on your phone and search the APP by "MPRMS".

The viewer is provided for free.

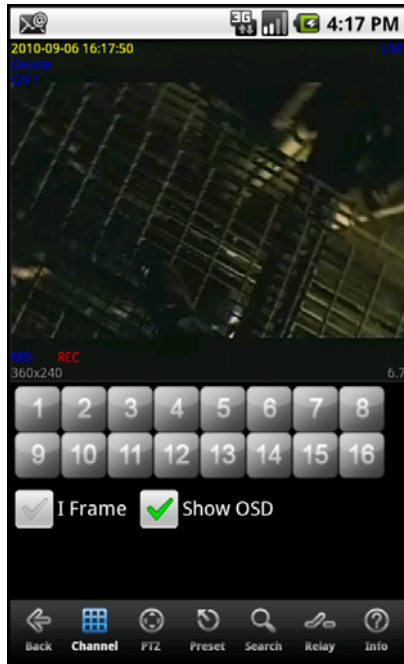
- HOW TO USE



1. Touch the **LIST** icon (DVR Registration)
  - a. **Add** : Register new DVR
  - b. POPUP menu
    - **Close** : Disconnect
    - **Delete** : Delete a DVR
    - **Edit** : Edit a DVR info.
  - c. **View** : Go to main screen.
  - d. **Info** : Show version and application info.

## 2. MAIN SCREEN

### A. Channel



Touch a numeric button to select a channel.

**I Frame** : I Frame transmission only.

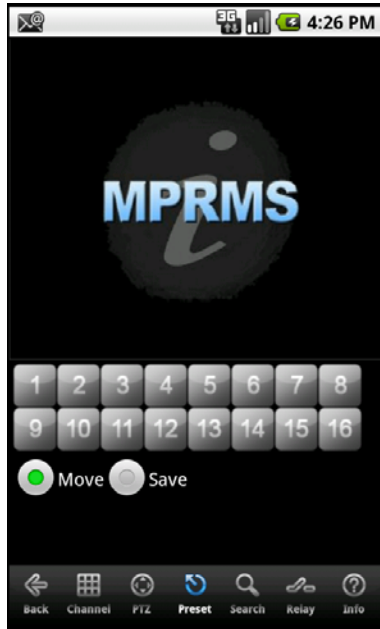
**Show OSD** : OSD (On Screen Display) ON/OFF

### B. PTZ



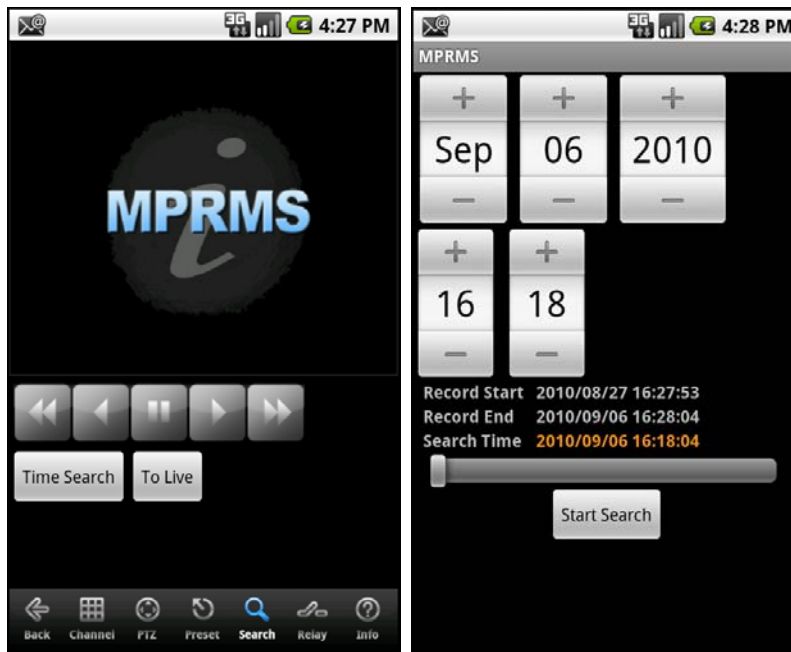
Touch the PTZ icon to control PTZ camera.

C. Preset



Setup PTZ Preset position.

D. Search



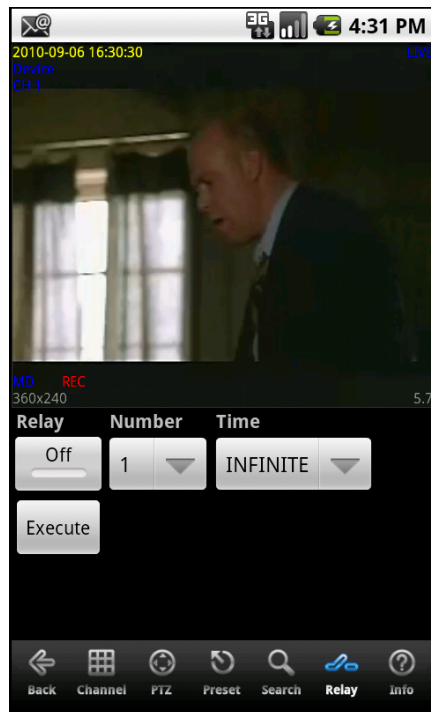
Touch the Search icon to call playback screen.

**Time Search** : Touch the Time Search to select the DATE / TIME.

Change the DATE /TIME or drag slide bar to set the time and touch the Start Search.

**To Live** : Back to Live mode.

E. Relay



Touch the Relay icon to control the relay out device of DVR.

F. Info



Touch the Info icon to see the DVR information.