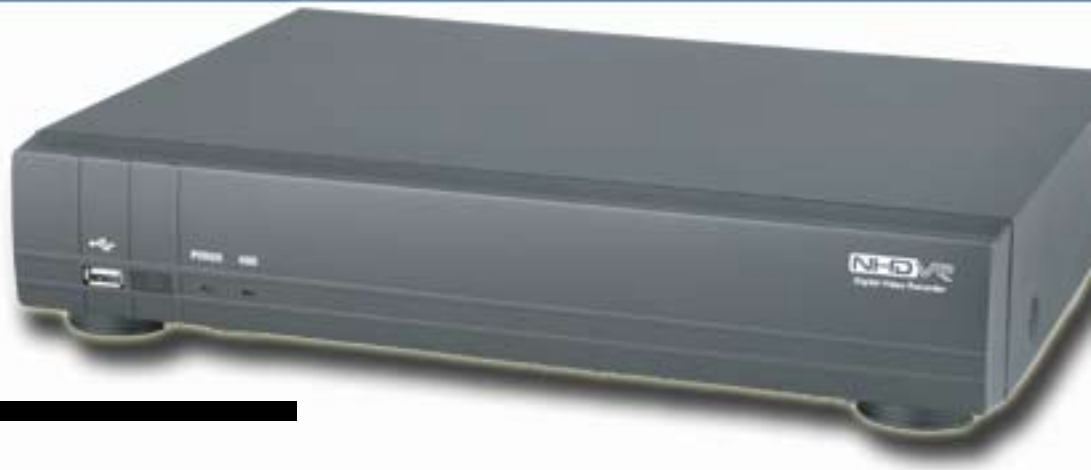


## 4 Channel DVR



## Features

- MPEG-4 Compression
- Triplex Operation
- Simple Interface
- AVI Backup
- Various Network Accesses
- Simple Scheduling
- Instant Back-up Function
- 250 GB HDD

## Specifications

- Camera inputs: 4 BNC
- Display Outputs: 1 VGA, 1 Spot
- Record: 120 fps
- Display: 120 fps
- Triplex: Network, Record, Playback
- Video Input: 4 BNC, 1.0Vp-p, 75 Ohm
- Alarm Input: 4
- Alarm Output: 1
- Recording: 352 x240 (120fps) / 704 x 480 (30fps)
- Recording Quality: Low, Medium, High
- Recording Mode: Continuous / Schedule / Motion / Sensor / Manual
- Playback Speed: Fast Forward / Reverse
- Search Mode: Event, Archive, Log, Time Line
- Back-Up: USB Flash Drive / Network
- Menu Display: Text UI
- Input Method: Remote Control
- Network: TCP/IP, DDNS
- Network Interface: 10/100 base-T Ethernet (RJ-45)
- Network Access: Multi-site Client Software, Web Browser
- Network Functions: Live, Search, Backup, PTZ Control
- Firmware Upgrade: USB
- Power Source: DC 12V adapter, Supplied
- Weight: 3.3 lbs / 1.5kgs
- Dimensions: 13.4" x 10.3" x 2.5" / 340 x 262 x 63mm

