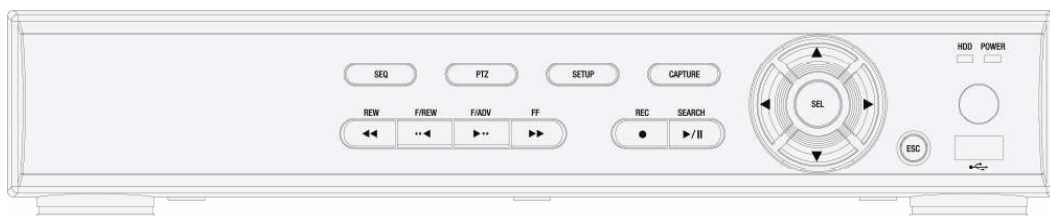


Network guide

EV4250

4 Channel MPEG-4 Digital Video Recorder



About this user guide

Before installing and using this unit, please read this user guide carefully.

Be sure to keep it handy for later reference.

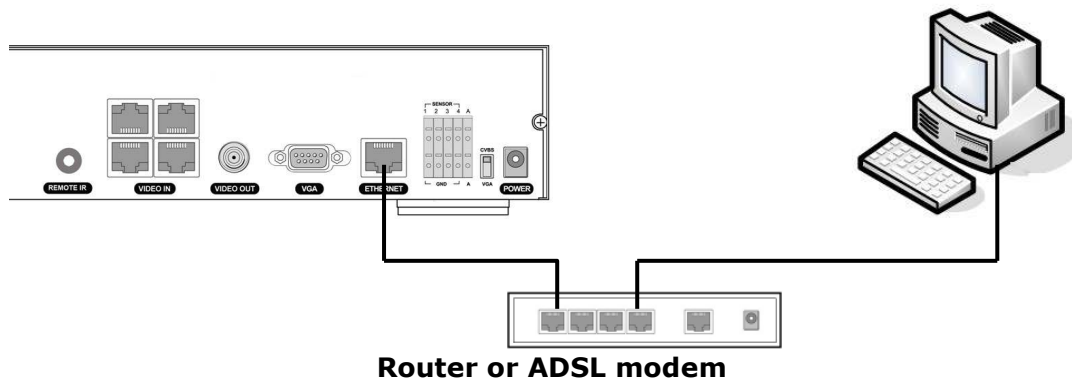
The specifications and information are subject to change without notice for quality improvement.

How to connect network

A. How to set IP address of the DVR and open TCP port of the router?

The port forwarding is dependant on the brand and model of the router. The port forwarding is required to allow access to the DVR beyond a router.

1. Connect network cable between DVR and Router or ADSL modem.

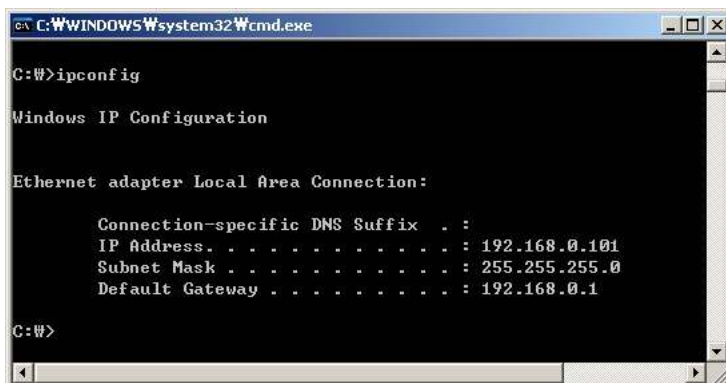
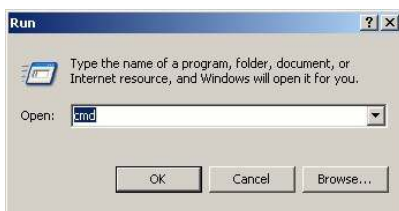


2. Default network setting on DVR are

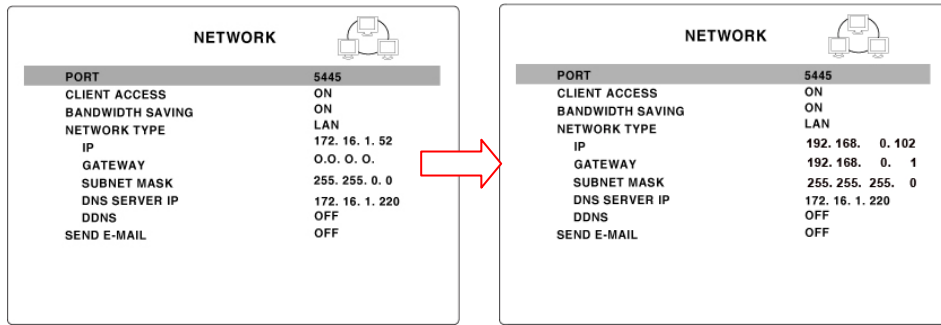
- Port: 5445
- IP ADDRESS: 172.16.1.52
- Subnet mask: 255.255.0.0
- Gateway: 0.0.0.0

| NETWORK | |
|------------------|--------------|
| PORT | 5445 |
| CLIENT ACCESS | ON |
| BANDWIDTH SAVING | ON |
| NETWORK TYPE | LAN |
| IP | 172.16.1.52 |
| GATEWAY | O.O.O.O. |
| SUBNET MASK | 255.255.0.0 |
| DNS SERVER IP | 172.16.1.220 |
| DDNS | OFF |
| SEND E-MAIL | OFF |

3. From PC connected in the same Router, find IP address, Gateway, and Subnet mask by IPCONFIG command in command prompt.



4. But if IP is something else like 192.168.x.xxx., you should change IP address, Subnet, Gateway on the DVR. Go to SETUP>NETWORK>LAN of the DVR and change the IP settings to be like IP: 192.168.XXX.XXX and Gateway: 192.168.XXX.XXX. (Refer to the user's manual of Router.)



- Open your web browser. Enter the router IP address in the address bar (The router IP address are different with the brand and model.), click GO.



- Enter the user name and password (**admin** is default) and press the **OK** button.



- Select the Port Range Forwarding tab.



- Enter the each field.
 - Application: Enter a description of the DVR (Example: store1)
 - Start: Enter the first number of the port you need to port forward (Example: 5445)
 - End: Enter the last number of the port you need to port forward (Example: 5445)
 - Protocol: Select Both.
 - IP address: Enter the IP address of the DVR on SETUP>NETWORK>LAN>IP ADDRESS.
 - Enable: Check the enable box.
- Select the Save settings button located on the bottom of the window. Then Port forwarding is finished.

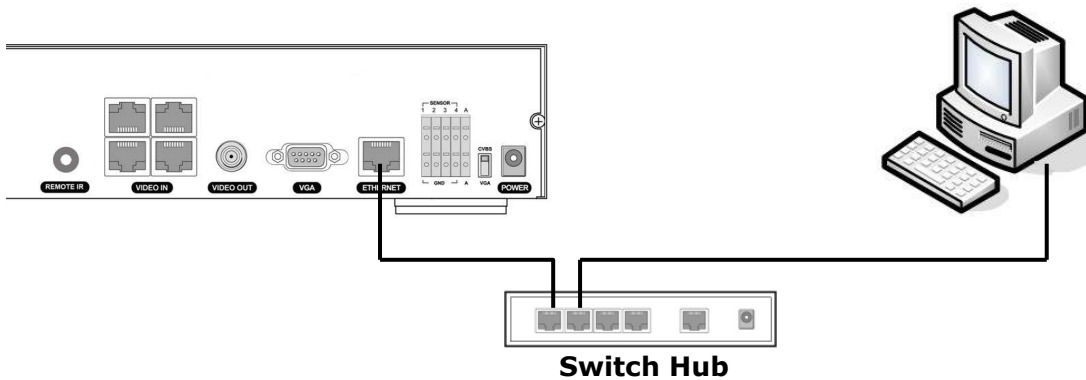


You can learn how to port forward many kinds of Routers from the bellow site.
http://www.portforward.com/english/routers/port_forwarding/routerindex.htm

B. How to access DVR from Remote PC?


■ LAN Connection – Using a switching hub

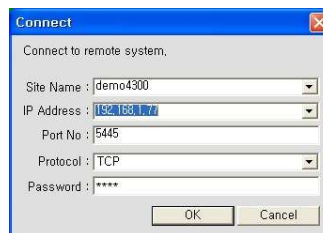
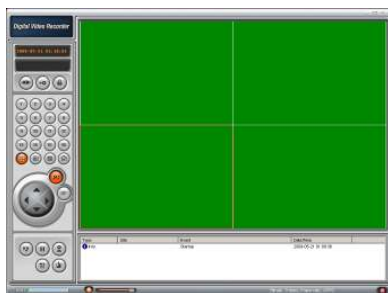
Connect to the system, using a hub (Switching hub) and an Ethernet cable (10BASE-T/100BASE-TX CAT 5 LAN cable)



1. Run the pre-install the network client software on the supplied CD. (Refer to Chapter 6. Network access using the Exclusive network viewer)
2. Check the IP address from SETUP>SYSTEM>DESCRIPTION of DVR.

| NETWORK | |
|------------------|------------------|
| PORT | 5445 |
| CLIENT ACCESS | ON |
| BANDWIDTH SAVING | ON |
| NETWORK TYPE | LAN |
| IP | 192. 168. 0. 102 |
| GATEWAY | 192. 168. 0. 1 |
| SUBNET MASK | 255. 255. 255. 0 |
| DNS SERVER IP | 172. 16. 1. 220 |
| DDNS | OFF |
| SEND E-MAIL | OFF |

3. Run network client software and click  button.

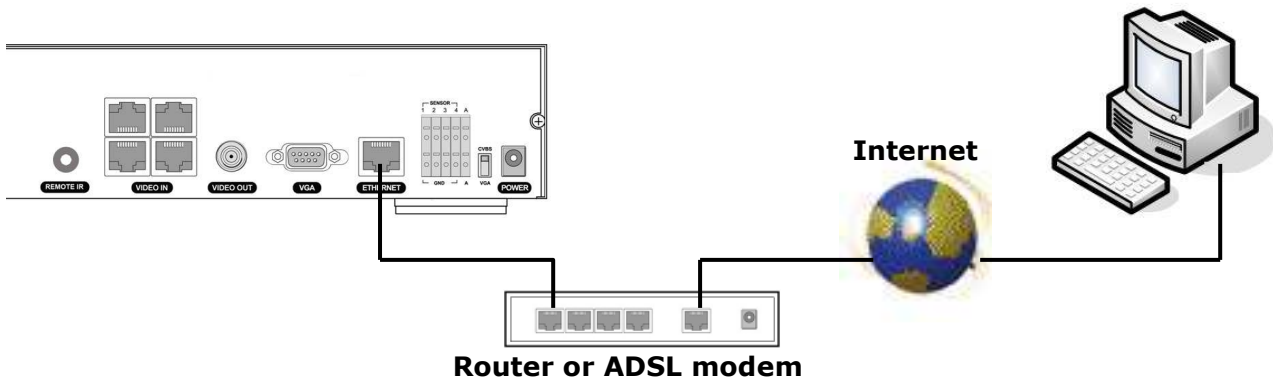


4. Input IP address, Port No., and Password on the connect window. And click OK.

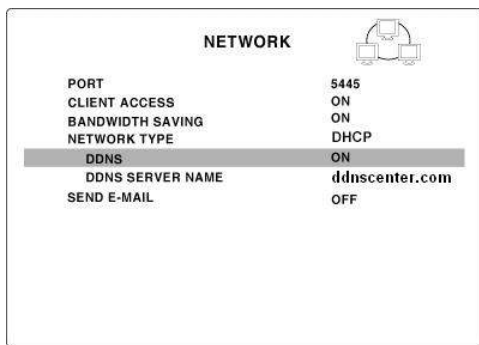


■ Internet (ADSL) Connection using DDNS

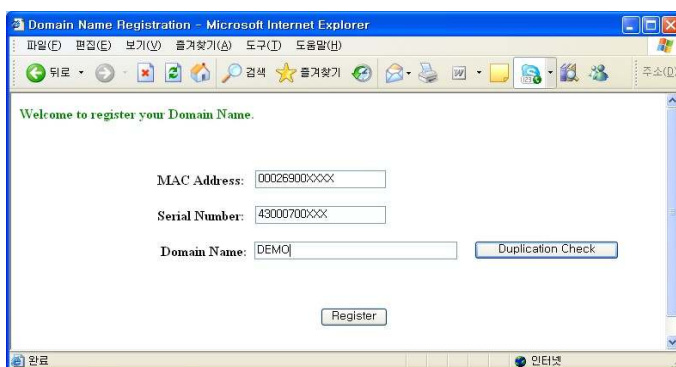
Connect to the system, using an Router or ADSL modem and an Ethernet cable (10BASE-T/100BASE-TX CAT 5 LAN cable)



1. Go to SETUP>NETWORK. Set NETWORK TYPE as DHCP and DDNS SERVER as ON. And make sure that DDNS SERVER NAME is ddnscenter.com

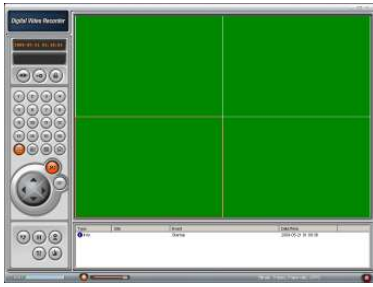



2. Go to Setup menu of Router and open TCP port 5445 using Port Forwarding. (Refer to A. How to set IP address of the DVR and open TCP port of the router?)
3. Confirm the Mac address and Serial No. from the label of the rear panel of the DVR.
4. Open the web browser and log on <http://www.ddnscenter.com>

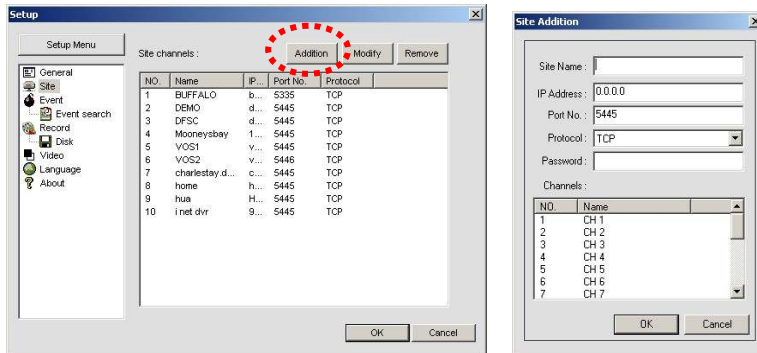


- MAC Address: Input the Mac address (EX. 0002690XXXXX) without a space.
 - Serial Number: Input the Serial No. (EX. 43000700XXX.) without a space.
 - Domain Name: Input Domain Name for your DVR system (Note. Input only Domain Name and never input “ddnscenter.com”).
5. Click the DUPLICATION CHECK button to see if the domain name is available.
 6. If you see the screen “You can use the Domain name you entered” then click RETURN and click REGISTER button to complete the registration.


- Run the pre-install the network client software on the supplied CD. (Refer to Chapter 6. Network access using the Exclusive network viewer)

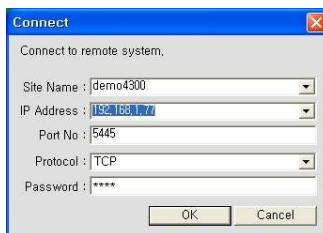


- Click  button and add the DVR as necessary.



- Site Name: Input the name of the DVR.
- IP Address: Input the Domain Name that is registered on <http://www.ddnscenter.com> (EX. XXXXX.ddnscenter.com)
- Port Number: Input the port number.
- Protocol: Select TCP.
- Password: Input the network password.

- Click  button. Then the Connect window is displayed.



- Select the site that you access and click OK.

