

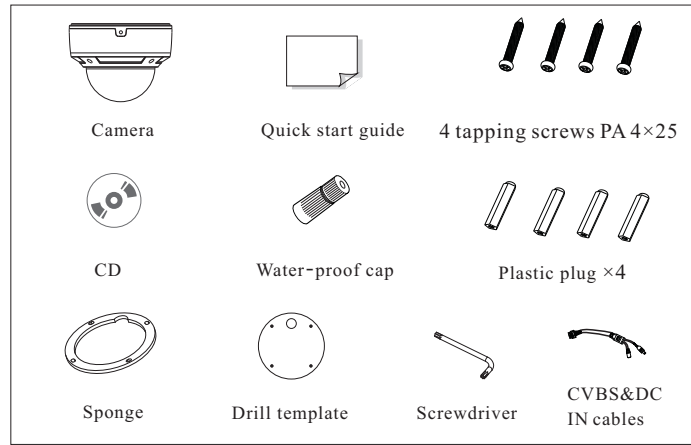
# Network Camera Quick Start Guide

Thank you for purchasing our product. There may be several technically incorrect places or printing errors in this manual. The updates will be added into the new version of this manual. We will readily improve or update the products or procedures described in the manual. The content is subject to change without notice.

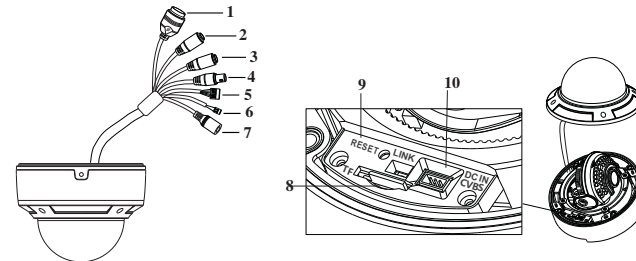
## 1 Warning and Caution

- If the product does not work properly, please contact your dealer or the nearest service center. Never attempt to disassemble the camera yourself. (We shall not be responsible for any problems caused by unauthorized repair or maintenance.)
- Keep away from liquid while in use.
- In the use of the product, you must be strict compliance with the electrical safety regulations of the nation and region. When the product is mounted on wall or ceiling, the device shall be firmly fixed.
- Do not use camera beyond specified voltage range.
- Do not drop the camera or subject it to physical shock.
- Avoid touching the camera lens.
- If cleaning is necessary, please use clean cloth to wipe it gently. If the device will not be used for a long time, please cover the lens cap to protect the device from dirt.
- Do not aim the camera at the sun or extra bright place.
- Do not place the camera in extremely hot, cold (the operating temperature shall be  $-20^{\circ}\text{C}\sim 50^{\circ}\text{C}$ ), dusty or damp locations, and do not expose it to high electromagnetism radiation.
- To avoid heat accumulation, good ventilation is required for operating environment.
- A few parts of the device shall be replaced regularly according to their average enduring time.

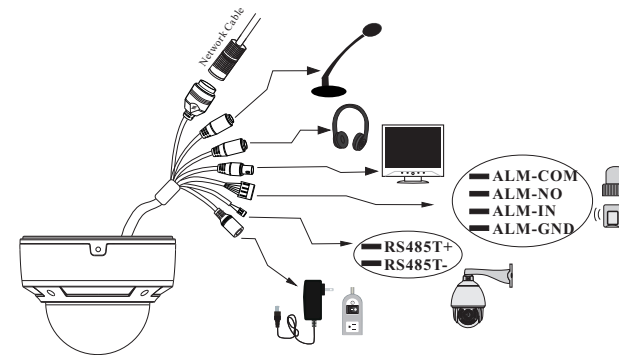
## 2 Package



## 3 Overview



1	Network Cable	6	RS485 Cable
2	Microphone Cable	7	Power Cable
3	Headphone Cable	8	TF Card Slot
4	Video Output	9	Reset Hole
5	Alarm Input/Output	10	CVBS/DC IN port for testing



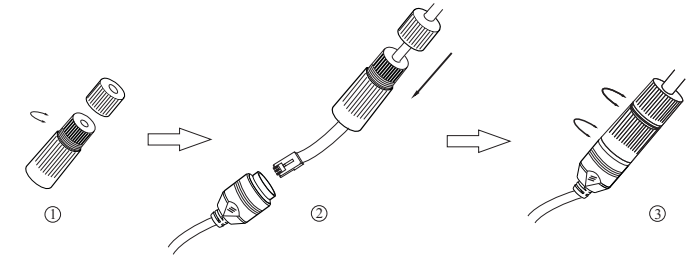
- \* 1 It is recommended to install the water-proof cap for network cable connection.
- \* 2 If the PoE network switch is used to connect the camera, DC12V power supply is not required.

### ● Alarm Connection

**Alarm Input:** Join the grounding ends of the sensor and the camera and then connect the signal cable of the sensor to the alarm input port of the camera.

**Alarm Output:** Loosen the screws in the alarm output port. Then insert the signal wires of the alarm output devices into the port of NO and COM separately. Finally tighten the screws. Some of the external alarm output devices need the power supply.

### ● Connecting Network Cable

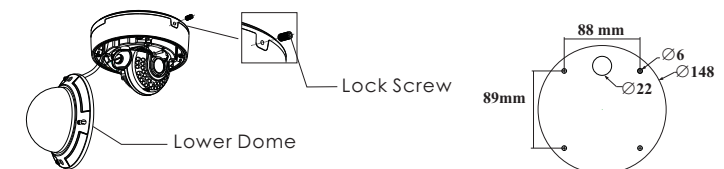


- ① Loosen the nut from the main element.
- ② Run the network cable (without RJ 45 connector) through the both elements. Then crimp the cable with RJ 45 connector.
- ③ Connect the cable to the hermetic connector. Then tighten the nut and the main cover.

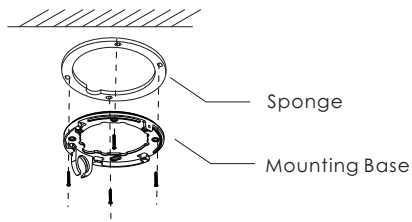
## 4 Installation

Before start, please make sure that the wall or ceiling is strong enough to withstand 3 times the weight of the camera. Please install and use the camera in the dry environment. You'd better install back the lower dome less than 4 hours after removing it. The mounting steps are as follows:

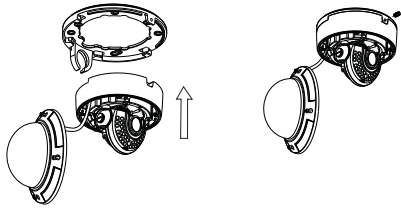
- ① Loosen the screws to open the lower dome and then loosen the lock screw to remove the mounting base.
- ② Attach the drill template to the place where you want to fix the camera and then drill 4 screw holes and 1 cable hole (if you want to route the cables through the mounting base) according to the drill template.



③ Route and connect these cables. Then secure the mounting base to the ceiling or wall with screws.

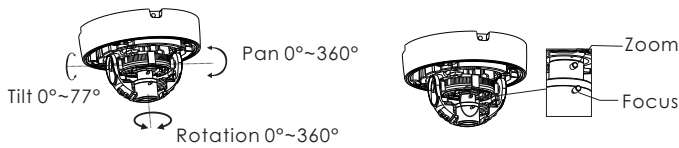


④ Fix the camera to the mounting base with the lock screw.

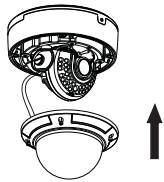


⑤ Three-axis adjustment. Before adjustment, preview the image of the camera on a monitor and then adjust the camera according to the figure below to get an optimum angle.

⑥ Adjust the Focus and Zoom screw to get a clear image (if your camera is fixed lens, please skip this step).



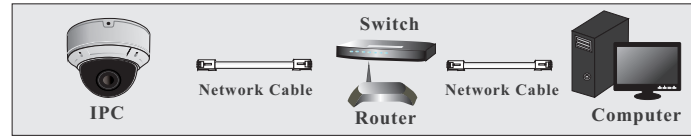
⑦ Install the lower dome back to the camera with the screws and remove the protection film softly to complete the installation.



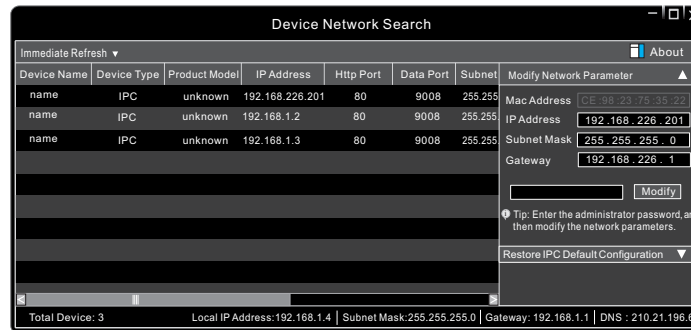
## 5 IE Network Connection

Here we take accessing IP camera via LAN for example. In LAN, there are two ways to access. 1. Access through IP-Tool; 2. Directly Access through IE Browser

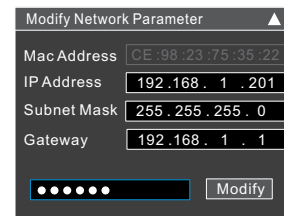
### ● Access the camera through IP-Tool



- ① Make sure that the camera and the PC are well connected via LAN.
- ② Find the IP-Tool from the CD and then install it in the computer. After that, run the IP-Tool as shown below.



③ Modify the IP address. The default IP address of this camera is 192.168.226.201. Click the information of the camera listed in the above table to show the network information on the right hand. Modify the IP address and gateway of the camera and make sure its network address is in the same local network segment as that of the computer. Please modify the IP address of your device according to the practical situation.



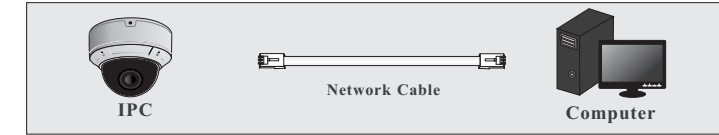
For example, the IP address of your computer is 192.168.1.4. So the IP address of the camera shall be changed to 192.168.1.X. After modification, please input the password of the administrator and click “Modify” button to modify the setting.

⚠ The default password of the administrator is “123456”.

④ Double-click the IP address and then the system will pop up the IE browser to connect IP-CAM. After downloading Active X control, a login window will pop up. Input the user name and password to login.

⚠ The default username is *admin*; the default password is *123456*.

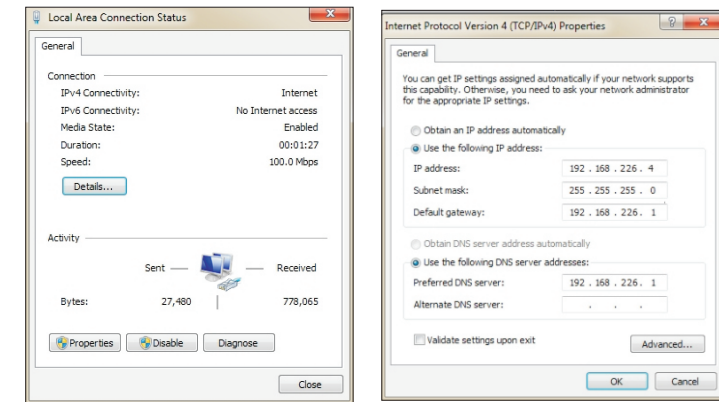
### ● Directly Access Through IE



The default network settings are as shown below:  
 IP address: 192.168.226.201      HTTP:80  
 Subnet Mask: 255.255.255.0      Data Port:9008  
 Gateway: 192.168.226.1

You may use the above default settings when you log in the camera for the first time.

① Set the IP address of the PC and make sure the network segment should be as the same as the default settings of IP-CAM. Open the network and share center. Click “Local Area Connection” to pop up the following window. Select “Properties” and then select Internet protocol according to the actual situation (for example: IPv4). Next, click “Properties” button to set the network of the PC.



② Open the IE browser and input the default address of IP-CAM and confirm. The IE browser will download Active X control automatically.  
 ③ After downloading Active X control, the login dialog box will pop up.  
 ④ Input the default username and password and then enter to view.