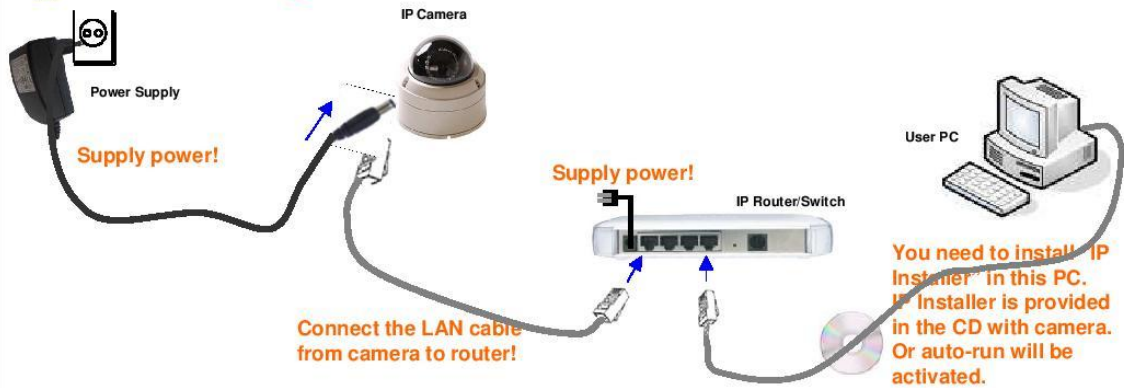


1 The First Thing You Need to Do



2 IP Setting

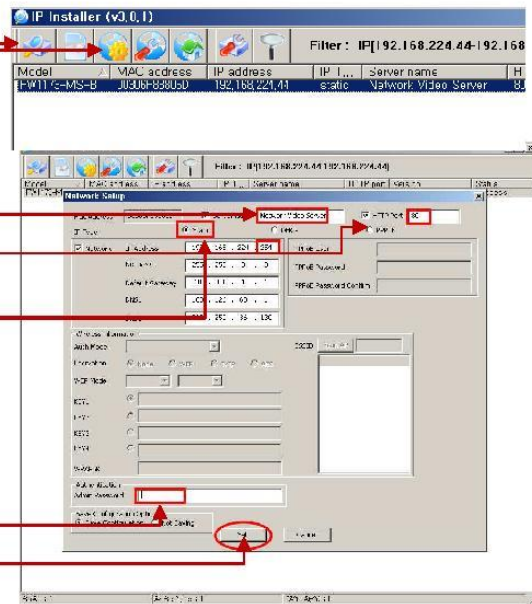
- Execute IP Installer on Desktop.
- Press Scan button. IP cameras under the same router will be searched and listed. It takes a few seconds. Default IP address is 10.20.30.40.
- Select searched product, and press Auto-IP setting button. Then you will see the windows as the right side.
- Put Server name as you want.
- Check Http port and put **80**. This is an internal port.
- IP address: You can use auto-scanned IP **192.168.0.254** as it is. Set IP Type static.

Typical IP setting is as follows.
 IP addr.: 192.168.0.10 (you can change the last digit)
 Netmask: 255.255.255.0
 Gateway: 192.168.0.1

DNS1/2: You can copy the PC's network properties. This is for Internet environment.

- Input "root" here for password.
 - Do not forget to press "Set".
- If you see "Do you want to change network information?", click "yes". Please wait until network information gets changed.

If this IP setting is completed well, you will see the changed IP address on screen and "success" in the status column.



Factory Default ID: root , Password: root

3 Image Viewing under the Same Router

- Please double click the selected product or click "homepage" after select product on the list.



- Please click "Liveview" on top right of the screen.
 * If the PC is internet-connected, Active X control should be downloaded as follows. No. 3.



- Please click yes for "ActiveX Control".

* If the PC is not internet-connected, you need to install SmartViewer.exe in the CD provided with camera.

Only after installation of Active X or SmartViewer, you can view live images.

Live view main screen





QUICK GUIDE FOR IMAGE VIEWING

4 Web Admin Menu Detail

