





Opticom has been at the forefront of Industrial Video since 1973.

We are well known in the industrial world for providing products that are second to none in terms of performance and their ability to endure the most extreme industrial settings.

Contact us

 5420 Beckley Road, Suite 228
Battle Creek, MI 49017

 1 800 578.1853

 opticomtech.com

 info@opticomtech.com



PRODUCT CATALOG

INDUSTRIAL VIDEO SPECIALIST



INDUSTRIAL CAMERAS

CC02 Series



CC02-CAMERA Rugged Industrial Analog Camera

- High Impact
- 700 TVL Resolution
- Vibration Resistant
- Titanium Alloy Housing
- Extreme Temperature Rating
- IP68 Waterproof/Dustproof
- 12v or 24v option
- Lens Options: 2.9mm, 4.3mm, 6mm, 8mm, 12mm, 16mm



CC02-TVI CAMERA Rugged Industrial High Definition (HDTVI) Camera

- High Impact
- 1080p Resolution
- Vibration Resistant
- Titanium Alloy Housing
- Extreme Temperature Rating
- IP68 Waterproof/Dustproof
- 12v or 24v option
- Lens Options: 2.9mm, 4.3mm, 6mm, 8mm, 12mm, 16mm

INDUSTRIAL CAMERAS

CC04 Series

CC04-IP3MV / CC04-IP5MV

Rugged Industrial High Definition IP Networking Camera

- Triple Stream H.265 & H.264 & M-JPEG
- 3 Megapixel / 5 Megapixel
- Night Color With Super High Sensitive Sensor
- Supports OnVif Standard
- IP67 Weatherproof / Dustproof
- (PoE) Power Over Ethernet & 12v Power
- Available in 2.85mm or 6mm Lens



HIGH IMPACT
VIBRATION RESISTANT



INDUSTRIAL CAMERAS

CC03 Series



IP Networking High Definition Explosion Rated Cameras

CC03-IP2MF36IR

IP Networking High Definition Explosion Rated Camera with Fixed Lens

- 2 Megapixel CMOS Sensor
- 3.6mm Fixed Megapixel Lens
- Max. 30fps @ 2MP (1920x1080)
- Dual Stream (H.264, MJPEG)
- 39 Pc. IR Array – 20m Range
- CSA / FM / ATEX / IEC Approvals
- IP66 Waterproof / Dustproof



CC03-IP2MVFIR

IP Networking High Definition Explosion Rated Camera with Varifocal Lens

- 2 Megapixel CMOS Sensor
- 3.5~16mm Varifocal Auto Iris Lens
- Max. 30fps @ 2MP (1920 x 1080)
- Dual Stream (H.264, MJPEG)
- 39 Pc. IR Array 20m Range
- CSA FM ATEX IEC Approvals
- IP66 Waterproof Dustproof



CC03-IP3MVFIR-M

IP Networking High Definition Explosion Rated Camera with Motorized Lens

- H.265 3 Megapixel CMOS Sensor
- 5.0~50mm Motorized Lens
- Max. 30fps @ 2MP (1980 x 1080)
- Dual Stream (H.265, H.264, MJPEG)
- 39 Pc. IR Array 20m Range
- CSA FM ATEX IEC Approvals
- IP66 Waterproof Dustproof



INDUSTRIAL CAMERAS

CC06 Series - Stainless steel

CC06-HB23F

AISI SS316 Analog Stainless Steel Camera

- 1/3" SONY Super HAD II Sensor
- 700 TV Line Resolution
- 2.3mm Wide Angle Lens
- AISI 316 Stainless Steel Housing
- 24 Piece IR LED Array
- Corrosion / Bacteria Resistant
- Smart 3D-DNR / SENS-UP x8
- SS316 Bracket Included
- IP67 Waterproof/ Dustproof

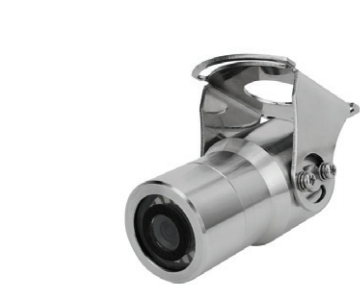


INDUSTRIAL CAMERAS *CC06 Series - Stainless steel*

CC06-NB12VF5-M

AISI SS316 IP Networking High Definition Stainless Steel Bullet Camera

- 5 Megapixel Resolution
- 2.8~12mm Megapixel Lens
- AISI 316 Stainless Steel Housing
- True Day/Night with ICR Mechanism
- SMART IR – Enhanced Night Vision
- Corrosion / Bacteria Resistant
- SENS-UP for Extreme Sensitivity
- IP67 Waterproof/ Dustproof



CC06-HB36F

AISI SS316 Analog Stainless Steel Camera

- 1/3" 960H SONY Super HAD II Sensor
- 700 TVL Resolution / 3.6mm Lens
- AISI 316 Stainless Steel Housing
- 15 Piece White LED Array
- Remotely Adjustable LED Control
- Corrosion / Bacteria Resistant
- Smart 3D-DNR / SENS-UP x8
- SS316 Bracket Included
- IP67 Waterproof/ Dustproof



CC06-ND12VF5-M

AISI SS316 IP Networking High Definition Stainless Steel Dome Camera

- 5 Megapixel Resolution
- 2.8~12mm Megapixel Lens
- AISI 316 Stainless Steel Housing
- True Day/Night with ICR Mechanism
- SMART IR – Enhanced Night Vision
- Corrosion / Bacteria Resistant
- SENS-UP for Extreme Sensitivity
- IP67 Waterproof/ Dustproof

CC06-HBU36F-K

AISI SS316 Underwater Stainless Steel Camera

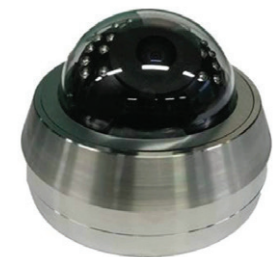
- 1/3" 960H SONY Super HAD II Sensor
- 700 TVL Resolution / 3.6mm Lens
- AISI 316 Stainless Steel Housing
- 15 Piece White LED Array
- Remotely Adjustable LED Control
- Corrosion / Bacteria Resistant
- Smart 3D-DNR / SENS-UP x8
- SS316 Bracket Included
- IP67 Waterproof/ Dustproof



CC06-TD12VF-X

AISI SS316 High Definition (HDTV) Stainless Steel Dome Camera

- Full HD Resolution – 1080P
- 2.8~12mm Megapixel Lens
- AISI 316 Stainless Steel Housing
- True Day/Night with ICR Mechanism
- HD-TVI or Analog Output Selectable
- Corrosion / Bacteria Resistant
- XDR – eXtreme Dynamic Range
- IP67 Waterproof / Dustproof



INDUSTRIAL CAMERAS

Thermal Camera

OPT-7MFTD

Facial Recognition & Access Control

The fever detection camera can also authenticate an individual with facial recognition software if an existing photo database exists.

Utilizing ultra-high precision AI technology, the camera is able to perform facial recognition in milliseconds, enabling users to move quickly past any access point.

Our camera ships with the software and a mounting stand included and will play a pivotal role in the protection of front-line workers and the general public.

Available in wired or wireless.



COMMERCIAL CAMERAS *Bullet cameras*

TIB 2805PX

HDTVI/EXSDI/HDSOI/960H Varifocal Bullet Camera

- 2.4 Megapixel / 1080p Resolution
- 2.8-12mm / 6.50mm Lens
- 250ft Night Vision Distance
- HD TVI, EXHD SDI, 960 H
- ICR Filter Change Function
- Heater



MIB-4131SV3

4MP Network Bullet Camera

MIB-8131SV3

8MP Network Bullet Camera

- 2.8mm Fixed Lens
- Smart IR / 100ft Distance
- Built-in Micro SD Slot
- H.265+. H.264, MJPEG, Video Compression
- Two Way Audio Support
- (PoE) Power over Ethernet & 12v Power
- IP67 Ingress / Protection
- Intelligent Analytics
- Supports Triple Streaming



COMMERCIAL CAMERAS

Bullet Cameras

TIB-5103SV

HD-TVI Bullet Camera

- 5 Megapixel / 1080p Resolution
- 2.8mm Lens
- HD TVI, HD CVI, AHD, CVBS
- 100 ft IR Distance
- ICR Filter Change Function
- 3-Axis Cable Management Bracket



MIB-5151SV3

5MP Network Bullet Camera

MIB-8151SV3

8MP Network Bullet Camera

- 2.8~12mm Motorized Varifocal Lens
- Smart IR / 180ft Distance
- Built-in Micro SD Slot
- H.265+. H.264, MJPEG, Video Compression
- Two-Way Audio Support
- (PoE) Power over Ethernet & 12v Power
- IP67 Ingress / Protection
- Intelligent Analytics
- Supports Triple Streaming



TIB-2801PX

HDTVI, HDSOI, Analog Bullet Camera

- 2.4 Megapixel / 1080p Resolution
- Motorized 2.8-12mm Lens
- HD TVI, EXHD SDI, HD SDI, 960 H
- 180ft IR Distance
- ICR Filter Change Function
- 3 Axis Cable Management Bracket
- Heater



COMMERCIAL CAMERAS

Dome Cameras

MIV-5131SV3 5MP Network Vandal Camera

- 2.8mm Fixed Lens
- Smart IR / 100ft Distance
- Built-in Micro SD Slot
- H.265+. H.264, MJPEG, Video Compression
- Two Way Audio Support
- (PoE) Power over Ethernet & 12v Power
- IK10 & IP67 Ingress / Protection
- Intelligent Analytics
- Supports Triple Streaming

MIV-8131SV3 8MP Network Vandal Camera



ONVIF®



MIV-5151SV3 5MP Network Vandal Camera



ONVIF®



MIV-8151SV3 8MP Network Vandal Camera

- 2.8~12mm Motorized Varifocal Lens
- Smart IR / 180ft Distance
- Built-in Micro SD Slot
- H.265+. H.264, MJPEG, Video Compression
- Two-Way Audio Support
- (PoE) Power over Ethernet & 12v Power
- IK10 & IP67 Ingress / Protection
- Intelligent Analytics
- Supports Triple Streaming

SPECIALTY CAMERAS

MIN-8180SV3 4K Panoramic IP Bullet

- 8 MP 180 Panoramic View
- Smart IR Illumination
- Starlight Support
- Supports Triple Streaming
- PoE/ DC
- NON-NDA Compliant



ONVIF®

TIL-2622 HDTVI License Plate Camera

- 1/2.8" 2.4 Mega Pixel
- 6-22mm Motorized Megapixel Lens
- 2 White Light & 2 Infrared LED
- Real WDR / 3DNR
- 0.017 lux
- IP66 RATED
- 12V DC Power



MIL-4832SV3 IP Networking License Plate Recognition Camera

- 4 Megapixel Resolution
- 8~32mm Motorized Varifocal Lens
- ICR auto switch, true day/night
- 3D DNR, true WDR, HLC, BLC and ROI coding
- Built-in micro SD card slot, up to 256GB
- DC12V/AC24V/PoE power supply
- Support three streams
- IP67
- Support mobile surveillance by smart phones with iOS and Android OS
- Intelligent analytics: license plate recognition, vehicle type detection



ONVIF®



SPECIALTY CAMERAS

MIF-6131SV IP Networking 6MP Fisheye Networking Camera

- Max Resolution 2160 x 2160
- 6 Megapixel Fisheye
- Up To 100 Feet At Night
- 360 View With Built in Mic



ONVIF®



SPECIALTY CAMERAS Pan/Tilt/Zoom Cameras

TIP-4003 HDTVI/Analog PTZ Camera

- 1080P HD
- 30x Optical / 16x Digital Zoom
- Smart IR with 330ft distance
- 0 Lux Minimum Illumination
- Up To ± 0.1 Preset Accuracy
- Self-Adaptive Pelco-P/D Protocol
- IP-66 Rated
- 3D Intelligent Positioning Function





MIP-4125
4MP 25X IP PTZ Camera

- 1/2.5" 4MP Resolution
- Powerful 25x Optical Zoom
- Smart IR with 330ft distance
- Micro SD slot
- IP66 Rated
- Poe + / 12DC POWER



PROCESSORS/RECORDERS

Processor

QS4-8
Dual Page Quad Video Processor

- 2 Video Outputs
- 4 Channel Audio Inputs
- 8 CH video input
- Adjustable Image Quality by Channel
- Zoom Function
- Multi Channel Freeze Function
- Motion Detection Alarm
- Image Loss Alarm
- IR Remote Control
- 2/4/8 Split Screens



SVD SERIES
Digital Video Recorders



- Tribrid HD-TVI/ HD-AHD/ HD-CVI/ 1080P
- H.265 / H.264 High Profile Compression
- 5, 4, 3 Megapixel/ 1080P/ 720P/ 960h
- BNC, HDMI & VGA Video Output
- 8 Additional IP Camera Support

AVAILABLE MODELS

4 Channel DVR SVD-2404C	8 Channel DVR SVD-2408C	16 Channel DVR SVD-2416C	32 Channel DVR SVD-2432C
-----------------------------------	-----------------------------------	------------------------------------	------------------------------------

SVN-2500
POE NVR

- Built in POE switch
- H.265 High Profile Compression
- 8MP/5MP/4MP/3MP/1080P/960P/720P
- Intuitive and User-Friendly GUI
- Dual Stream Recording
- Add Recorder Feature



AVAILABLE MODELS



4 Channel NVR, POE
SVN-2504P4C



8 Channel NVR, POE
SVN-2508P8C



16 Channel NVR, POE
SVN-2516P16C

SVN- 2500E
Non-POE NVR



- H.265 High Profile Compression
- Support Add Recorder Feature
- 4K Recording All Channels
- Dual nic Support
- Supports P2P, built-in DDNS, DHCP

AVAILABLE MODELS

32 Channel NVR SVN-2532EC



INDUSTRIAL MONITORS

FSM Series

FSM-101B

10.1" CCTV Monitor Industrial Flat Screen Monitors

- HDMI, VGA, BNC (looping)
- 3D Comb Filter
- 3D De-Interlace
- LED Illuminated Panel
- Stand Included



FSM-215C-TVI

21.5" TVI CCTV Monitor

- 1920 x 1080 True High Definition
- BNC (Analog, HDTV) HDMI, VGA
- Built-In Speakers
- VESA Standard Mount
- Metal housing

FSM-32B

32" CCTV Monitor Industrial Flat Screen Monitors

- HDMI, VGA, BNC (looping), Built In Speakers
- 3D Comb Filter
- 3D De-Interlace
- Bright LED Illuminated Panel
- Desk Stand Included / VESA Mountable

FSM-43C

43" CCTV Monitor Industrial Flat Screen Monitors

- 2 x HDMI, VGA, Audio, RS232 I/O, USB
- UHD4K2K Resolution
- PIP/PBP Supported
- LED Illuminated Panel
- VESA Standard
- Aluminum & Metal Casing
- Low Profile

FSM-55C

55" TVI CCTV Monitor Industrial Flat Screen Monitors

- 2 x HDMI, VGA, Audio, RS232 I/O, USB
- UHD4K2K Resolution
- PIP/PBP Supported
- LED Illuminated Panel
- VESA Standard
- Aluminum & Metal Casing
- Low Profile

INDUSTRIAL MONITORS

IP Networking Monitors

FSM

IP Networking Industrial Flat Screen Monitors

- LED Backlight
- Full High Definition
- Mouse Included
- VESA Standard Mount
- ONVIF Protocol
- Metal Housing
- Server Included with Brackets



AVAILABLE SIZES

21.5" FSM-215C-64IP	32" FSM-32B-64IP	43" FSM-43B-64IP	55" FSM-55C-64IP
-------------------------------	----------------------------	----------------------------	----------------------------

LCDI

IP Networking CCTV Monitor

- LED Backlight
- Full High Definition
- Mouse Included
- VESA Standard Mount
- ONVIF Protocol
- Metal Housing
- Built in Processing



AVAILABLE SIZES

23.8" LCDI-24IP-16	32" LCDI-32IP-32	43" LCDI-43IP-32	55" LCDI-55IP-32
------------------------------	----------------------------	----------------------------	----------------------------

WIRELESS

IP Network

AR-5803-900

IP Networking Wireless

- Plug & Play WiFi
- PoE Power
- 1000Mbps
- Dip Switch Settings
- 1 Mile Transmission Distance
- 5.8GHz Transmission



AR-5808-900

IP Networking Wireless

- PoE Power
- 300Mbps
- 4.9 Mile Transmission Distance
- 5.8 GHz Transmission



IP CAMERA KITS

IPK-1504P4-1T

4 IP Camera Kit

- 1 x NVR
- 4 x 20M CAT5E
- 4 x Outdoor Dome
- 1 x 1 TB HDD



IPK-1508P8-2T

8 IP Camera Kit

- 1 x NVR
- 8 x 20M CAT5E
- 8 x Outdoor Dome
- 1 x 2 TB HDD

ACCESSORIES

Camera & Monitor Mounts

VM-1 / VM-1Y

Vibration / Shock Mount for CC02 camera

- For Use with Opticom CC02 Camera
- Designed for Extreme Vibration Applications
- Extends Camera life
- Easy to Install



MVM-EXP-1

Vibration Explosion Proof Camera Mount

- Anti-Vibration Mount
- Visco-Elastic Polymer Bushings
- Heavy Gauge Aluminum Construction
- Easy-Adjust Tilt / Swivel
- Fits: CC03 Series Cameras



*CC03 Camera not Included

MVM-LCD-101

Vibration Monitor Mount, 64lbs

- LCD Monitor Anti-Vibration Mount
- Extends Monitor Life
- Advanced Vibration Damping Polymers
- Heavy Gauge Aluminum Construction
- Easy Adjust Tilt / Swivel



A full list of accessories available on our website
800.578.1853 • OPTICOMTECH.COM

